

Release and Installation Notes

BEM 2K3 version 11.21.5

Document version 1: 08 June 2021.

Contents

BEM and Toolbox Updates	1
Installation Procedure for the BEM 2K3 version 11.21.5 Package	2
Changes from 11.21.3 to 11.21.5.....	10
BEM	10
RRD	11
Changes from 11.21.1 to 11.21.3.....	11
Changes from 11.21.0 to 11.21.1.....	11
Changes from 3.11.5.0 to 11.21.0.....	11
Changes from 3.11.4.5 to 3.11.5.0.....	12
Changes from 3.11.4.4 to 3.11.4.5.....	12
Changes from 3.11.4.3 to 3.11.4.4.....	12
Changes from 3.11.4.2 to 3.11.4.3.....	12
Changes from 3.11.4.1 to 3.11.4.2.....	12
Changes from 3.11.4.0 to 3.11.4.1.....	13
Operating System Requirements	14

BEM and Toolbox Updates

To avoid any incompatibility problems and to enable all facilities, the Toolbox program you are running should be version 3.21.11 or later.

Installation Procedure for the BEM 2K3 version 11.21.5 Package

Open the **2c BEM 11 Production 11-21-5.zip** file and save the **2c BEM 11 Production 11-21-5.msi** file in any convenient location.

Please do not proceed with the installation unless you have both your Registered User Code and the Upgrade Code applicable to this version.

Should you wish to purchase an upgrade to the 11 series or have purchased an upgrade and do not have your User or Upgrade Codes, please contact lyndon@moto-sheets.com

Any installed BEM version commencing with 3.11 or 11.21 MUST be removed via Control Panel, Programs and Features before installing this update.

Note that 11.x versions of BEM can co-exist with 10.x versions. Recommended action is that all earlier versions of BEM are removed once 11.21.5 is successfully installed and run to avoid inadvertently running earlier version that will not be compliant with the current UCI and local Association Regulations.


Removal Procedure

Note that screen shots are taken from Windows 7 Pro and may vary depending on the version of windows installed.

Click Start, Control Panel, Programs and Features (Add and Remove Programs in Windows XP)

[Uninstall or change a program](#)

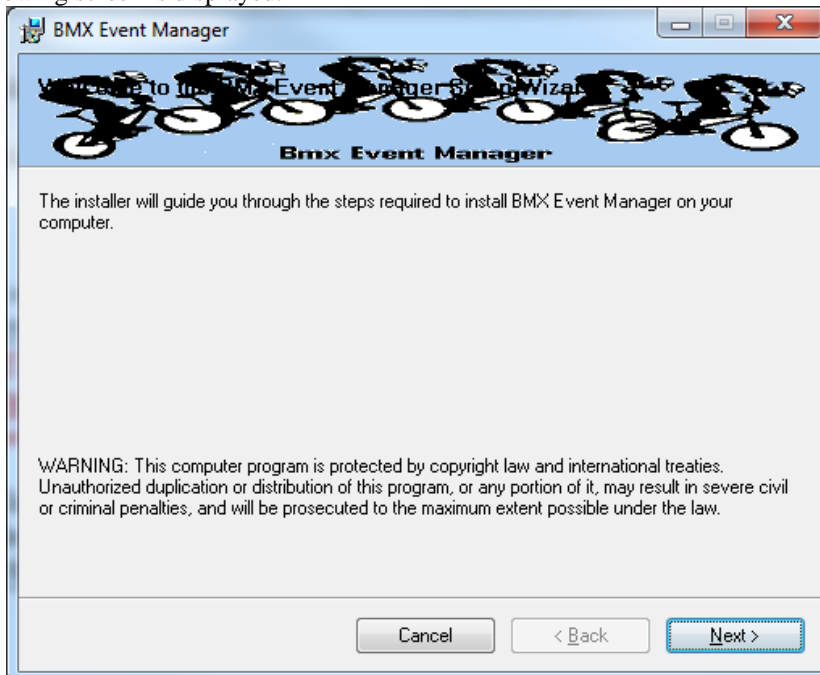
To uninstall a program, select it from the list and then click Uninstall, Change or Repair.

Organise ▾					
Name	Publisher	Installed On	Size	Version	
 BMX Event Manager	Bemman	20/01/2021	31.3 MB	11.21.1	

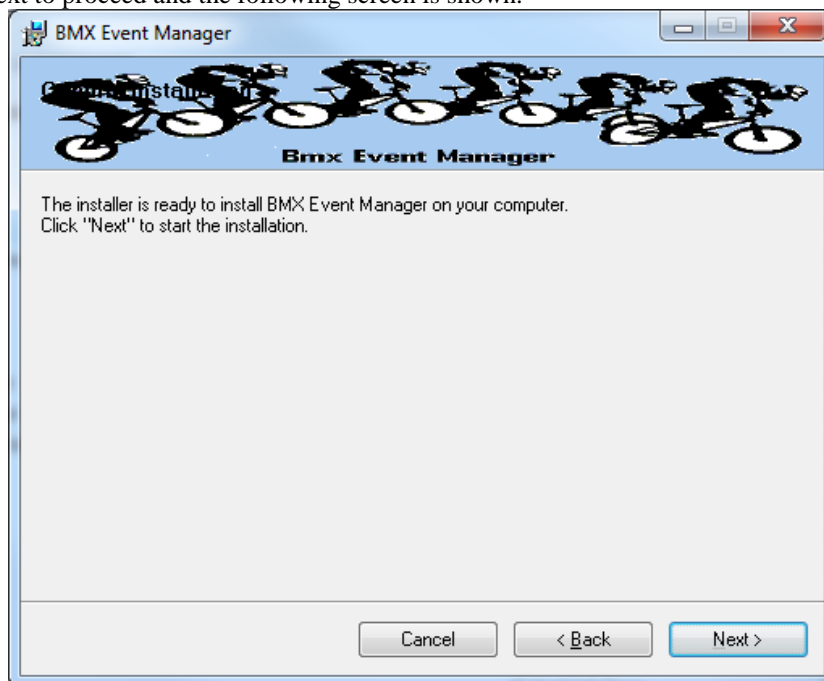
Right click on the selected Bem2K3 or BMX Event Manager then Left click on Uninstall. Answer Yes to any prompts required to complete the removal of the earlier version.

Double click on the **2c BEM 11 Production 11-21-5.msi** file saved earlier (see page 2) to start the installer.

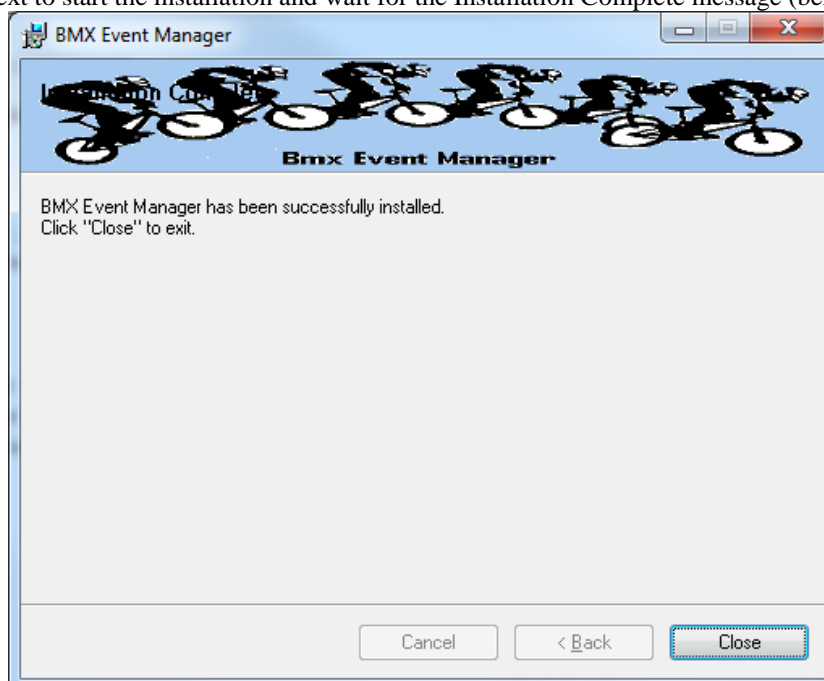
The following screen is displayed.



Click Next to proceed and the following screen is shown.



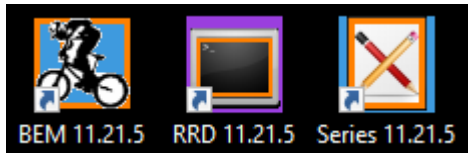
Click Next to start the installation and wait for the Installation Complete message (below).



Note that the installation is hardcoded into the folder structure:
C:\BEM\Programs\Event\3.11.x for BEM and Series programs
C:\BEM\Programs\Report\3.11.x for the RRD program.

If not done previously as per step 2.1 on page 16 of this document, Office 2007 and Office 2010 users should include the path C:\BEM\Programs in the Excel list of trusted locations.

The installation procedure installs the BEM, RRD and Series programs, adds the BMX Event Manager group in the Programs Menu and provides shortcuts on the Desktop.



Note: if the shortcuts are added but with default rather than the custom icons, please contact lyndon.downing@bigpond.com for assistance to resolve this issue.



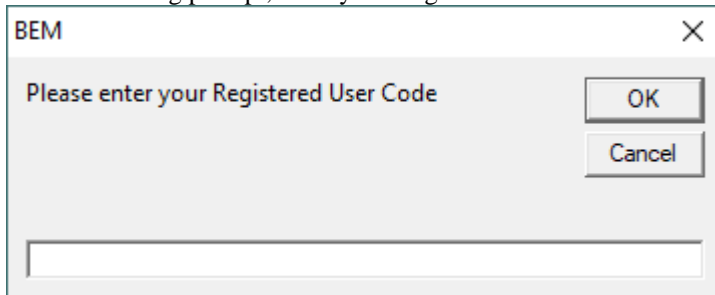
Double click on the BEM icon to start the program.
Note that the registration status at the top left of the screen will always show “Unlicensed Copy” before the language selection is made



Select the required language option then click OK

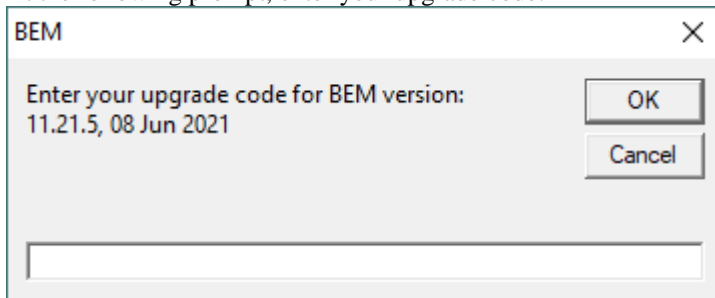
If you do not have a Registered User Code or Upgrade Code for this version then please contact lyndon.downing@bigpond.com

At the following prompt, enter your Registered User Code



A screenshot of a dialog box titled "BEM" with a close button (X) in the top right corner. The main text reads "Please enter your Registered User Code". To the right of the text are two buttons: "OK" and "Cancel". Below the text is a single-line text input field.

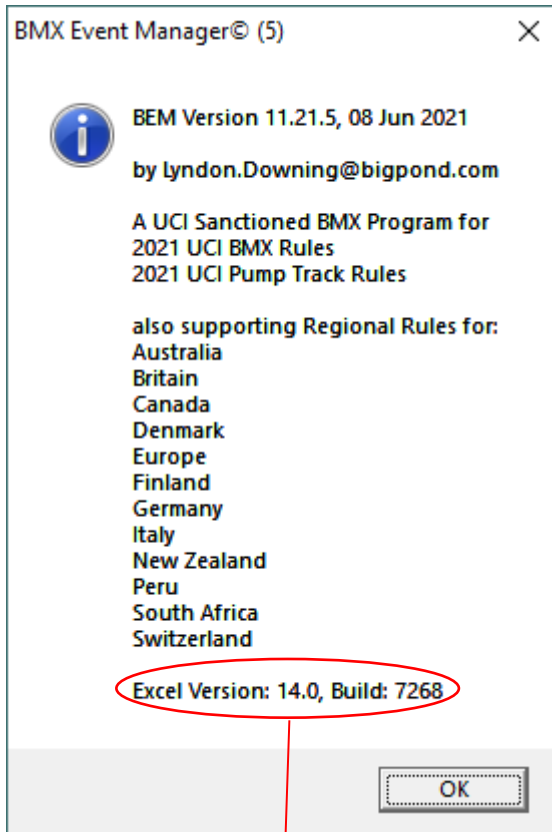
At the following prompt, enter your upgrade code:



A screenshot of a dialog box titled "BEM" with a close button (X) in the top right corner. The main text reads "Enter your upgrade code for BEM version: 11.21.5, 08 Jun 2021". To the right of the text are two buttons: "OK" and "Cancel". Below the text is a single-line text input field.

The BEM version and your PC's Excel version and build details will then be shown.

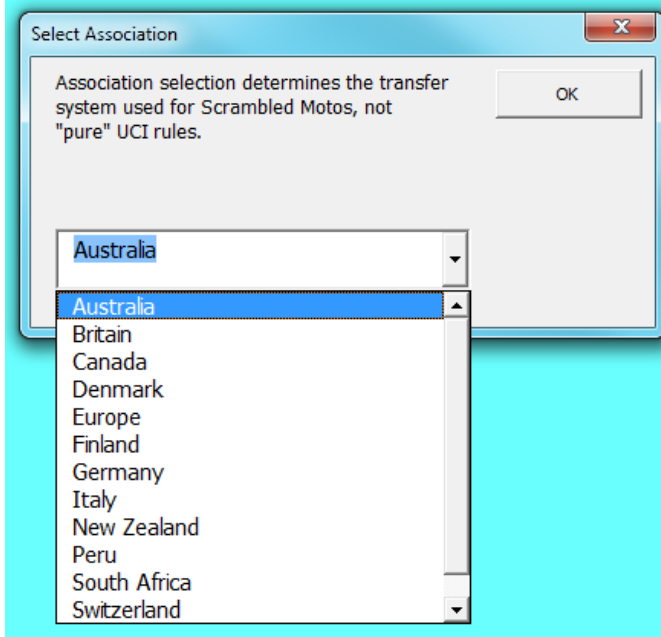
Check that your BEM version and date is as shown below.



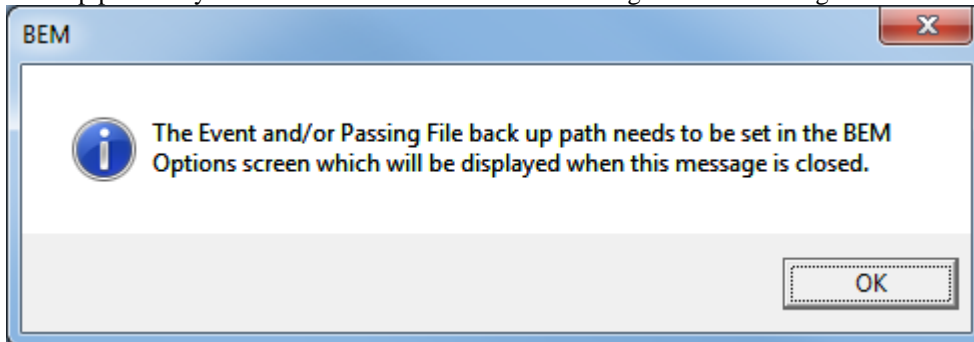
The banner also includes the Excel version and Build numbers running on your computer as a quick check that you have the latest Microsoft Office updates installed. If you do not have versions at least matching the following, there is a good chance that your version of Excel is not up to date and may result in unpredictable operation of the BEM program.

Version	Build	Comment
11.0	8404	Excel 2003, Service Pack 3+
12.0	6762	Excel 2007, Service Pack 2+
14.0	7268	Excel 2010, Service Pack 2+

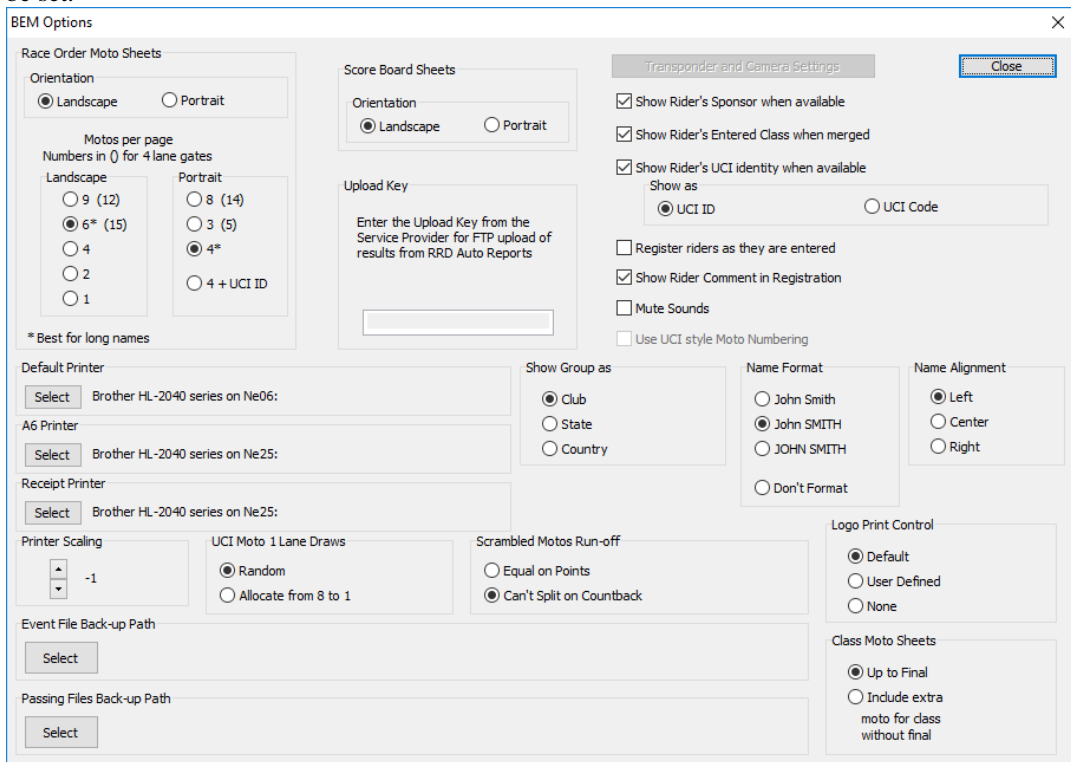
Select the appropriate Association / Region or UCI if used for other than the listed Associations.



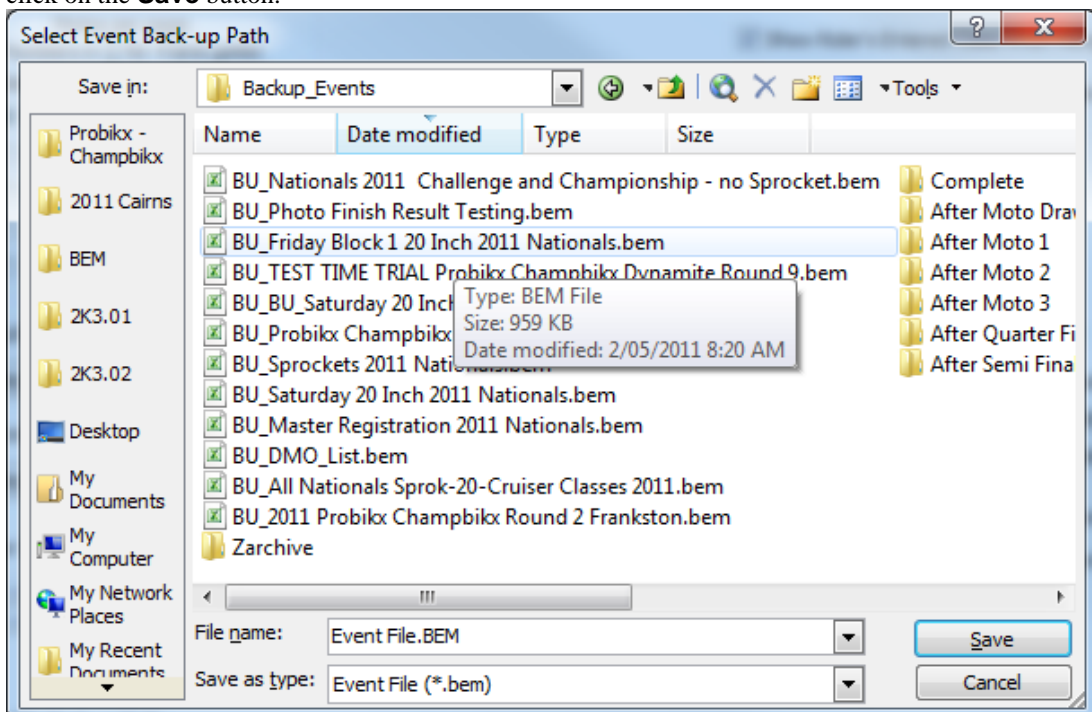
Note that the first time the BEM program is run as a first installation, the Event Files and Passing Files back-up paths may not be set or not valid and the following reminder message will be received.

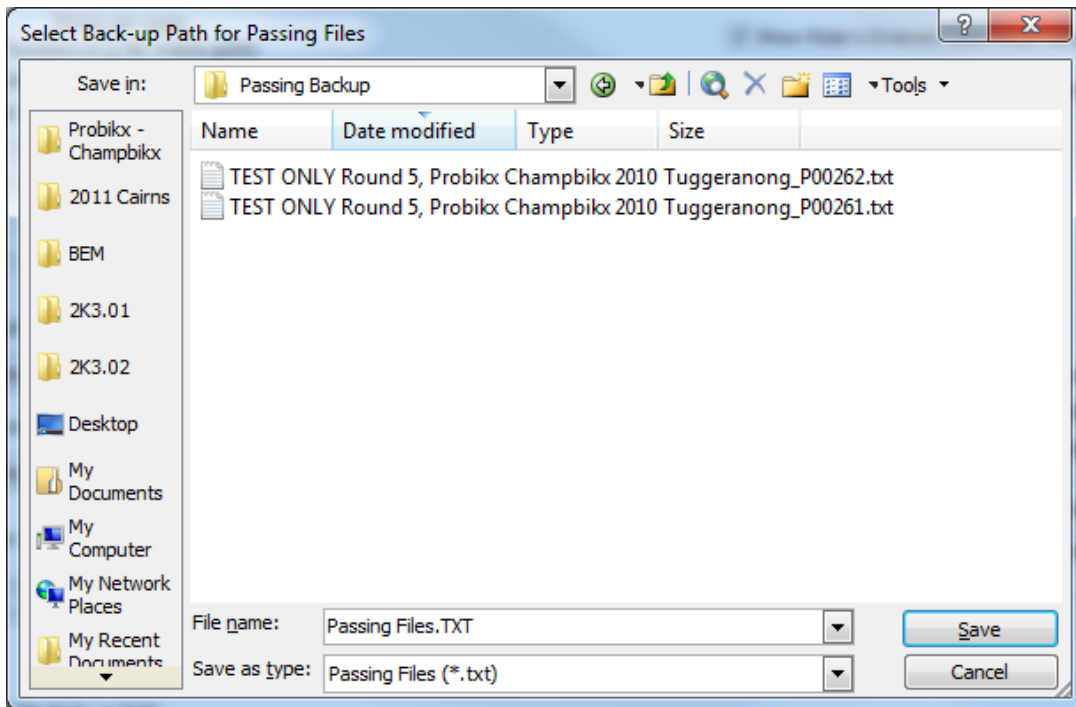


Note that the **Event File Back-up Path** and **Passing Files Back-up Path** are blank and need to be set.

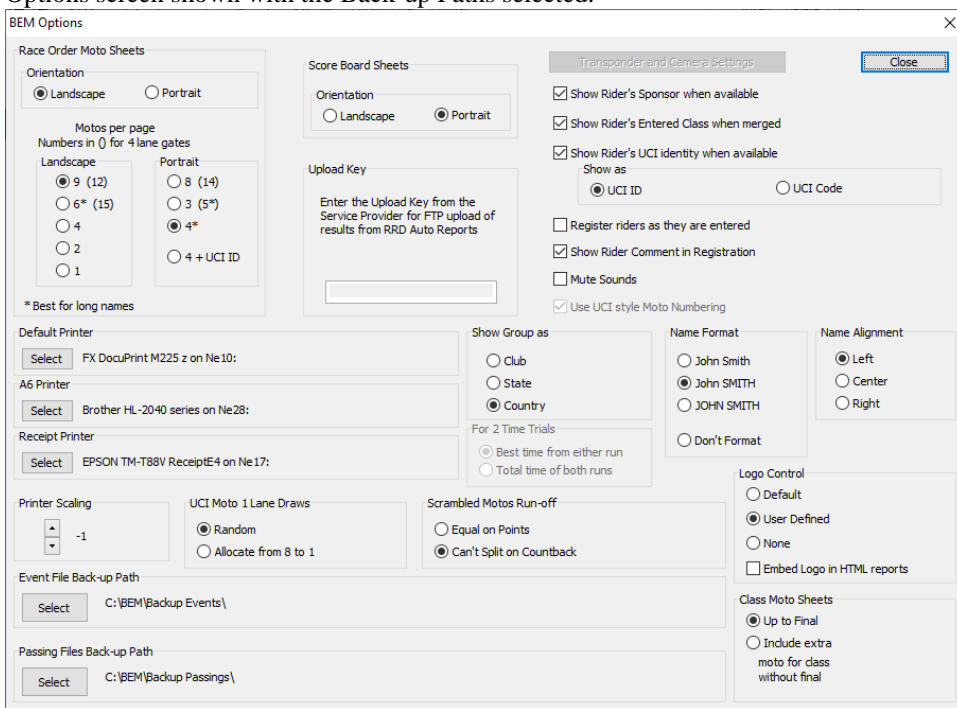


If you recoded the settings from an earlier version BEM installation restore those settings now. To select the paths, click on respective **Select** button, navigate to the required back up folder and then click on the **Save** button.





Options screen shown with the Back-up Paths selected.



Once the Event File Back-up and Passing File Back-up paths are selected and the Scrambled Motos Run-off setting is made you can close the options screen and select an Event File.

Changes from 11.21.3 to 11.21.5

BEM

- Adds a new facility to generate operator initiated Json format Start List reports from the Moto Sheets Menu.

Finals Menu: Red Bull UCI Pump Track World Championships Qualifier

Enter Results

Select Class Select Round Select Race Exit

Process Stage

One Class All Classes

Select Stage

Run Off (End Motos)
 Shootout and ABA
 Transfer to Moto 2
 Transfer to Moto 3
 First Final - All Classes
 TT SuperFinal
 1/32 Final
 1/16 Final
 1/8 Final
 1/4 Final
 Run Off (QF to SF)
 Semi Final
 Run Off (SF to Final)
 Final

Moto Sheets

One Moto
 One Class
 Race Range
 Multi Ranges
 Start each class on a new page
 BEM
 Score Board Sheets
 JSON Start List
 Commentary - Sponsor
 Port Land
 Gate Check
 L2R R2L

Excel Report File

Create UCI Results (DataRide) UCI Results (Info Strada) British Cycling Ranking

Result Sheets

One Moto
 One Class
 Race Range
 Multi Ranges
 Races / page
 9 (landscape)
 4 (portrait)
 1 (3 pencillers)
 .5 (5 pencillers)
 A6 Paper
 Pencilling
 Race Summary

Report Type

Preview Printer HTML
 Copies 1
 Clipboard Collate Auto Scroll Scroll

List Results

One Class All Classes
 Report Type
 Moto Points One Round Final Place Final Results Full Results Top 8 Time Trial
 Newspaper (J. Smith) Newspaper (John Smith)

All Classes per

Moto Order Final Order Class Order
 Start each class on a new page
 Show Lap Times when available
 Show Start Reaction when available

Lap Time and Split Time

Lap Time Fastest 50 Times
 Split Time Fastest Time per Rider per Class All Times for All Classes

- Adds a new facility to generate spontaneous Json format individual race results from the BEM Results Entry screen. The spontaneous Json reports are in addition to the existing spontaneous HTML reports with both reports stored in the C:\BEM\AutoReports\BemScore folder.

Enter Results: Red Bull UCI Pump Track World Championships Qualifier

Event F1

Class Men Moto Final Heat BIG FINAL

NAME	PLATE	PLACE	POINTS	LAP TIME	TOTAL POINTS	SPLIT TIME
Bruno SCHMIDT	136	1st	1	23.095	0	0.000
Peter FREEMAN	168	2nd	2	24.384	0	0.000

Race Comment
15:12:10

Transponder and Camera Control

Auto Accept
 Auto DNS DNF
 Auto Import
 Auto Run Round

Select Auto Import Transponder Passings Files

Passings File 1 C:\BEM\Passings\StartFinish\StartFinish.txt
 Passings File 2

Auto Print Report Selection

Auto HTML + JSON Results, Each Race
 0 Results, Each Race
 0 Results, Each Class
 1 Run Off
 0 Class Next Stage

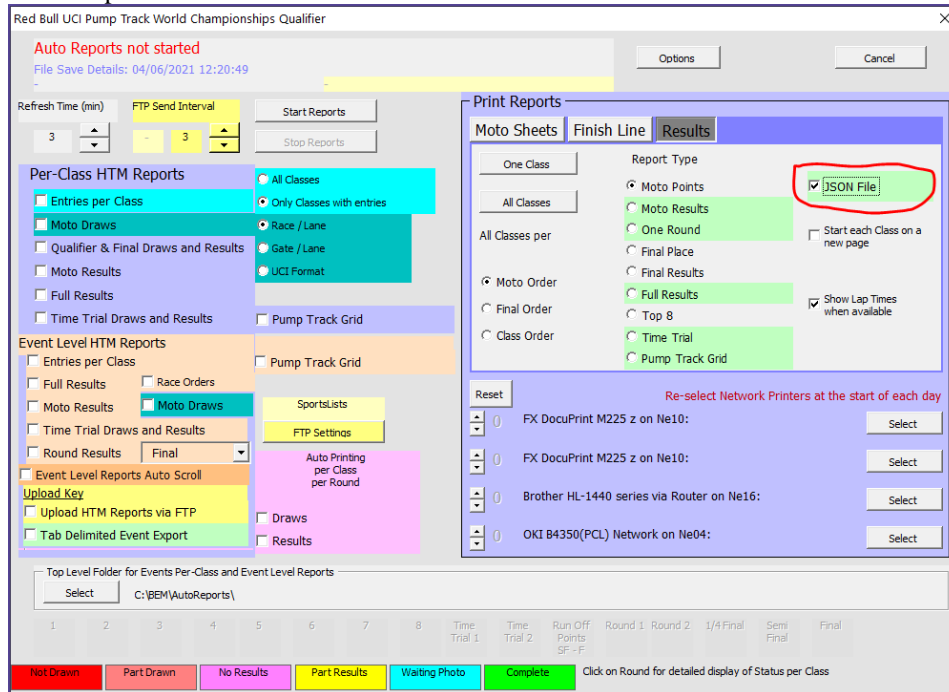
Accept without check

 Race

 Next on Accept
 Anticipate DNS
 Set Place by Time
 Stopwatch Pop up
 Auto Read Back
 Auto Process Stage
 15 min Finish to Score Check
 Write Lynx LIF on Accept
 Do not select Write Lynx if you don't know what this option does!
 Riders Sorted by
 Plate
 Moto Points
 Name

RRD

- Adds a new facility to generate operator initiated Json format results from Auto Reports menu. The available Json reports are highlighted when the JSON File option is selected I.e.
 - Moto Results
 - One Round
 - Full Results
 - Time Trial
 - Pump Track Grid



Changes from 11.21.1 to 11.21.3

- Protective patch to prevent an error when scanning a QR code when the cursor is not in the licence number field.
- Correction to prevent an error when doing an “Update Details” where either a Category or Club is not selected.
- Correction to the Series program where an error can occur for a printed series report where a Series Sponsor is specified.
- Update to the Json Start List reports from RRD.
 - Time Trial report now has a selectable format to show either single riders in start order or grouping of riders per category.
 - Correction to the Final round start list where the Json format had a syntax error for categories with more than a single A final.

Changes from 11.21.0 to 11.21.1

- Updated Event Sanctioning data for non BMX AusCycling memberships and EntryBoss default membership levels.
- Add operator warning in RRD should the system generated “Upload Complete” message fail when auto upload of results to SportsLists is used.
Note that this issue has only been seen on Windows 7 computers missing a Microsoft update. Should you receive this error, please contact Lyndon@moto-sheets.com for details to apply the Microsoft solution.

Changes from 3.11.5.0 to 11.21.0

- Change in version numbering convention reflecting the two BEM streams.
First number indicates the stream:

10.xx.xx series for general release.

11.xx.xx series, restricted distribution to licenced timing company operators.

xx.21.xx Second number indicates the rule compliance year.

xx.xx.1 Third number is the incremental release number.

For the most part, the 10 and 11 series updates will be released concurrently.

- For Australian users, added legacy Cycling Australia and MTBA membership levels in the entry validity check against the event sanctioning level.

RRD

- In the Json start list reports, separate Category, Round and Heat into separate fields.
- Correct display issues in the SportsLists results where:
 - Individual stage results did not always show the correct heat in the draw information.
 - Full results for Sprocket categories and classes without a final may not always have the moto results data matching the headings.

Changes from 3.11.4.5 to 3.11.5.0

- Update for UCI 2021 Rule changes.
- Add check that the number of starting lanes is set to 2 when any Pump Track Class Codes are used in the event.
- For Australian users.
 - Cater for encrypted Rider List Files.
 - Add AusCycling membership type checking against the 2021 AusCycling Rule Book event sanctioning.

Changes from 3.11.4.4 to 3.11.4.5

- Correction to a debug error that occurs when generating a Time Trial report where two timed runs are used, the better time from the two is used and any rider has a lap time > 59.999 seconds.
- Changes when Australia is selected as the Association in preparation for transition from BMXA to AusCycling.
 - Adds QR code scanning of AusCycling virtual membership cards, initially with the TidyHQ CA format.
 - Changes the method of validation of an entrant's membership type for event eligibility by cross referencing the membership type with the event sanctioning level.

Changes from 3.11.4.3 to 3.11.4.4

This release corrects two faults associated with Add / Review entries and therefore all BEM 3.11 users are requested to update to the 3.11.4.4 version at the earliest opportunity.

- Correction to a debug error that occurs when in Add Entries, doing and Add All and then clicking on the change to Review Entries button.
- When doing an Add All entries and selecting Yes to the skip duplicate entry prompt, individual prompts for all duplicates found was still being given.

Changes from 3.11.4.2 to 3.11.4.3

- Correction to a fault introduced with 3.11.4.0 where debug errors can occur in Add Entries or Review Entries.

Changes from 3.11.4.1 to 3.11.4.2

- Added a Groups and Runs export for Orbits5 (X2 decoders) which has different requirements to the existing Orbits Cycling export.
- Changed the field allocations in the Orbits Groups and Runs export to avoid conflicts when multiple categories are exported to the one Practice session. Field "No" now contains the race plate number and "registration" the internal BEM Tlink number which is unique for each entry.

- Corrected an omission where the Category name was not shown in the operator prompt when selecting the start order option for Timed Runs in Pump Track events.
- Corrected a problem introduced in 3.11.4.0 when there are more than 32K entries in the Rider List File and a rider at the upper end of the list is selected.

Changes from 3.11.4.0 to 3.11.4.1

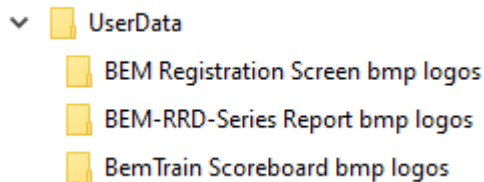
- Added logos to the Registration screen to allow for sponsor visibility. The default logos can be replaced with up to four user specified .bmp logos.

Screenshot shows default logos with Australia as the Association selection.

To add you own logos, put the appropriate .bmp files in **C:\BEM\UserData\BEM Registration Screen bmp logos** folder and change the logo option to User Defined.



- Changed user defined logo files for left and right headers from .jpg to .bmp for consistency across BEM and BemTrain with specific folders provided under the C:\BEM\UserData folder for each function for easier management of the logo files.



- Corrected a missing change in 4.11.4.0 that resulted in the rider's expiry date not being shown in the Registration screen where the Rider List file had more than 32K entries.

Operating System Requirements

The recommended PC environment is:

Operating System: 32 or 64 bit versions of Windows XP, Vista (OK but best avoided if possible), Windows 7 and for Windows 8 & 8.1 and Windows 10, full versions, not the RT tablet versions.

If you are using BEM in a networked environment to run transponder timing or the RRD program, use of the Professional rather than the Home versions of Windows are strongly recommended.

Microsoft Office: Office 2003, 2007 or Office 2010.

Note that BEM does not run on Office 2013, 2016 or Office 365 as Microsoft have not maintained full backwards compatibility with Office 2010, 2007 and 2003 versions.

For new PCs that come pre-installed with an Office version later than 2010, the following options are suggested.

1. If you don't have a specific requirement for the new facilities in the pre-installed version Office and haven't paid the licence fee for that:
 - a. Totally remove Office from the PC.
 - b. Buy and install a legitimate version of Office 2010 from eBay or from a download retailer such as https://www.ecrater.com.au/p/30522352/microsoft-office-2010-pro-plus-32-64-bit?gps=1&id=115926669379&keywords=&gclid=CjwKCAjwm4rqBRBUEiwAwaWjjK60coZew2EOxi9W_eodOHFfGc8FKc4vya1IbS3VT41eix1YEFxqnBoCRJgQAvD_BwE
or
https://theunitysoft.com/product/office2010proplus/?gclid=EAiaIQobChMI07_I7NXN4AIVGK6WCh2pWwWhEAYYBCABEgJcpvD_BwE

Typically a legitimate licence is available for around \$10 - \$30, significantly cheaper than the Office 365 / 2016 licence that Microsoft would like you to purchase.

2. If you need to keep the pre-installed Office version on the PC with either Win7, Win8 or Win 10.
 - a. Do a partial installation of Office 2010 installing only Excel 2010 which will happily co-exists with later Office versions.
 - b. To get BEM to open with Office 2010 when you also have later Office versions installed then either:
 - i. Open Excel 2010 before clicking on the BEM icon.
 - ii. Set up your own shortcuts to BEM, RRD, Series and Toolbox that direct to Office 2010. Note that in some PCs, particularly non-english language versions of Windows, the path to Office14 Excel may be different to this example.

Typical Shortcut Target when Office 2010 is a 32bit installation

BEM

"C:\Program Files (x86)\Microsoft Office\Office14\EXCEL.EXE" "C:\BEM\Programs\Event\3.11.x\Bem2K3.xls"

RRD

"C:\Program Files (x86)\Microsoft Office\Office14\EXCEL.EXE" "C:\BEM\Programs\Report\3.11.x\Rrd2K3.xls"

Series

"C:\Program Files (x86)\Microsoft Office\Office14\EXCEL.EXE" "C:\BEM\Programs\Event\3.11.x\Series2K3.xls"

Toolbox

"C:\Program Files (x86)\Microsoft Office\Office14\EXCEL.EXE" "C:\BEM\Programs\Toolbox\BEM_Toolbox3.xls"

BemTrain

"C:\Program Files (x86)\Microsoft Office\Office14\EXCEL.EXE" "C:\BEM\Programs\BemTrain\BemTrain.xls"

Typical Shortcut Target when Office 2010 is a 64bit installation

BEM

"C:\Program Files\Microsoft Office\Office14\EXCEL.EXE" "C:\BEM\Programs\Event\3.11.x\Bem2K3.xls"

RRD

"C:\Program Files\Microsoft Office\Office14\EXCEL.EXE" "C:\BEM\Programs\Report\3.11.x\Rrd2K3.xls"

Series

"C:\Program Files\Microsoft Office\Office14\EXCEL.EXE" "C:\BEM\Programs\Event\3.11.x\Series2K3.xls"

Toolbox

"C:\Program Files\Microsoft Office\Office14\EXCEL.EXE" "C:\BEM\Programs\Toolbox\BEM_Toolbox3.xls"

BemTrain

"C:\Program Files\Microsoft Office\Office14\EXCEL.EXE" "C:\BEM\Programs\BemTrain\BemTrain.xls"

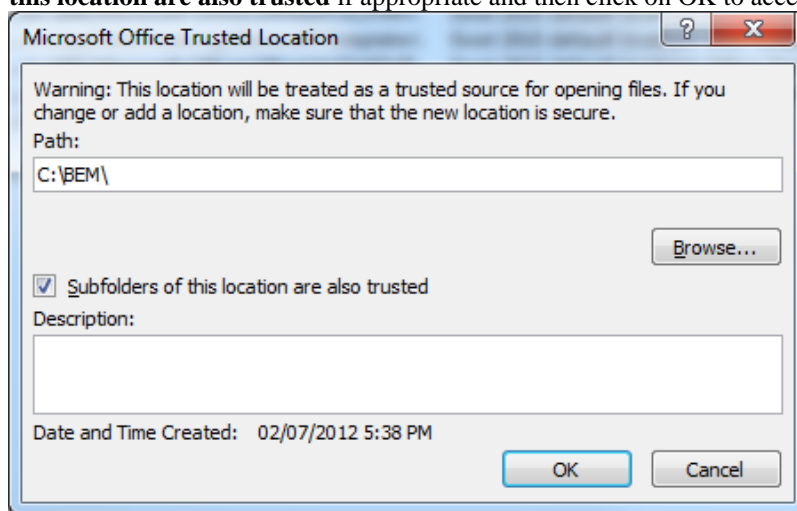
To add these shortcuts to the start menu, copy and paste or create the shortcuts in the following 'Hidden' folder:

C:\Users\username\AppData\Roaming\Microsoft\Windows\Start Menu\Programs

Now open Start Menu > All apps and locate the shortcut(s) you placed. Right-click on it and select Pin to Start.

The following preparatory actions if not already implemented from earlier releases of BEM will avoid compatibility problems.

1. Download and install the latest applicable Office 2003 / 2007 / 2010 service packs and updates. This is very important as there is a history of unpredictable operation should the latest Microsoft updates not be installed.
2. For users running Office 2007 and Office 2010.
 - 2.1. Include the C:\BEM path and any other locations where you save BEM files in the list of Excel Trusted Locations.
Method:
 - 2.1.1. Open Excel.
 - 2.1.2. Select **File** then **Options**.
 - 2.1.3. Select **Trust Center**.
 - 2.1.4. Click on **Trust Center Settings...** button.
 - 2.1.5. Click on **Add new location...** button and add any required paths and select the **Subfolders of this location are also trusted** if appropriate and then click on **OK** to accept and close the dialog



- 2.1.6. . • Click on **OK** to close each of the dialogs until back in Excel which now can be closed.